



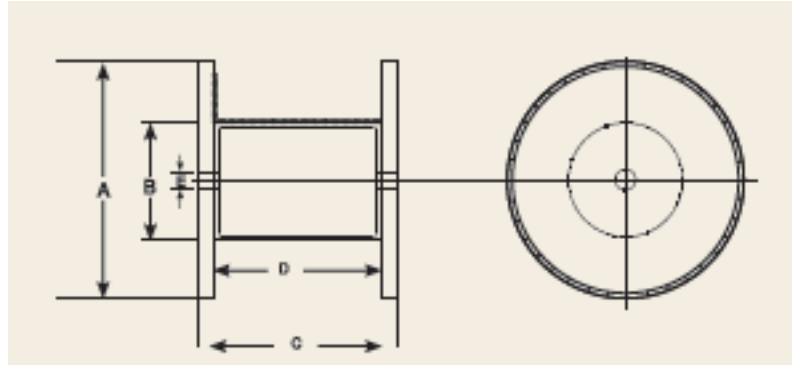
S.M.C

Drum Sizes and Dimensions Drum sizes and dimensions

A- Flange diameter (Excluding Lagging), mm

B- Barrel diameter, mm

C- overall width, mm D- Trave's width, mm E- Minimum spindle hole diameter, mm



Drum size D-No	A	B	C	D	E
D-6	60	250	470	400	110
D-7	70	325	570	500	110
D-8	80	375	570	500	110
D-9	90	425	620	550	110
D-10	100	500	690	600	110
D-11	110	575	740	650	110
D-12	120	675	950	850	110
D-14	140	800	950	850	110
D-16	160	950	970	850	110
D-18	1800	1100	1220	1100	110
D-19	190	1100	1230	1100	110
D-20	200	1300	1235	1100	110
D-21	210	1150	1290	1100	110
D-22	220	1400	1390	1250	110
D-23	234	1200	1795	1625	110
D-24	240	1200	1795	1625	110
D-25-S	2540	1200	1825	1625	110
D-25	254	1400	1800	1625	110
D-26	260	1400	1970	1800	110

Drum Dimensions in actual deliveries are subject to change without notice.